

January 21, 2019

Dear Mayor and Council,

I am writing to ask if you would consider including an analysis of the use of pathways as part of the active transportation planning that will soon commence.

Pathways could be made up of a combination of existing trails, municipal right-of-ways, municipal properties and, potentially could consider access through some private properties. The vision would be to have a network of pathways, such that a wide range of users could use paths to travel between main destinations in the municipality – Brentwood, Keating Industrial area, Saanichton, Tsawout and Tanner Ridge neighbourhoods.

I have included a series of maps that outline existing right-of-ways, streets, pathways and municipally-owned properties that might be food for thought for such discussion. All locations are approximate.

Will council consider include such investigations as part of the upcoming Active Transportation Planning?

Thank you in advance for your consideration of this request,

With kind regards,

Megan

Appendix A: Linking Brentwood to Tanner Ridge (including Keating Industrial Yard and Keating Elementary)

	The lines in green are existing municipal right of ways that have no existing access or pathways. The location of municipal right-of-ways are based on maps produced by the planning department staff at the municipal hall.
	The brown lines are existing pathways based on local knowledge of the author – there may be some missing.
	The red polygons are municipally-owned properties according to the map generated by the planning department.



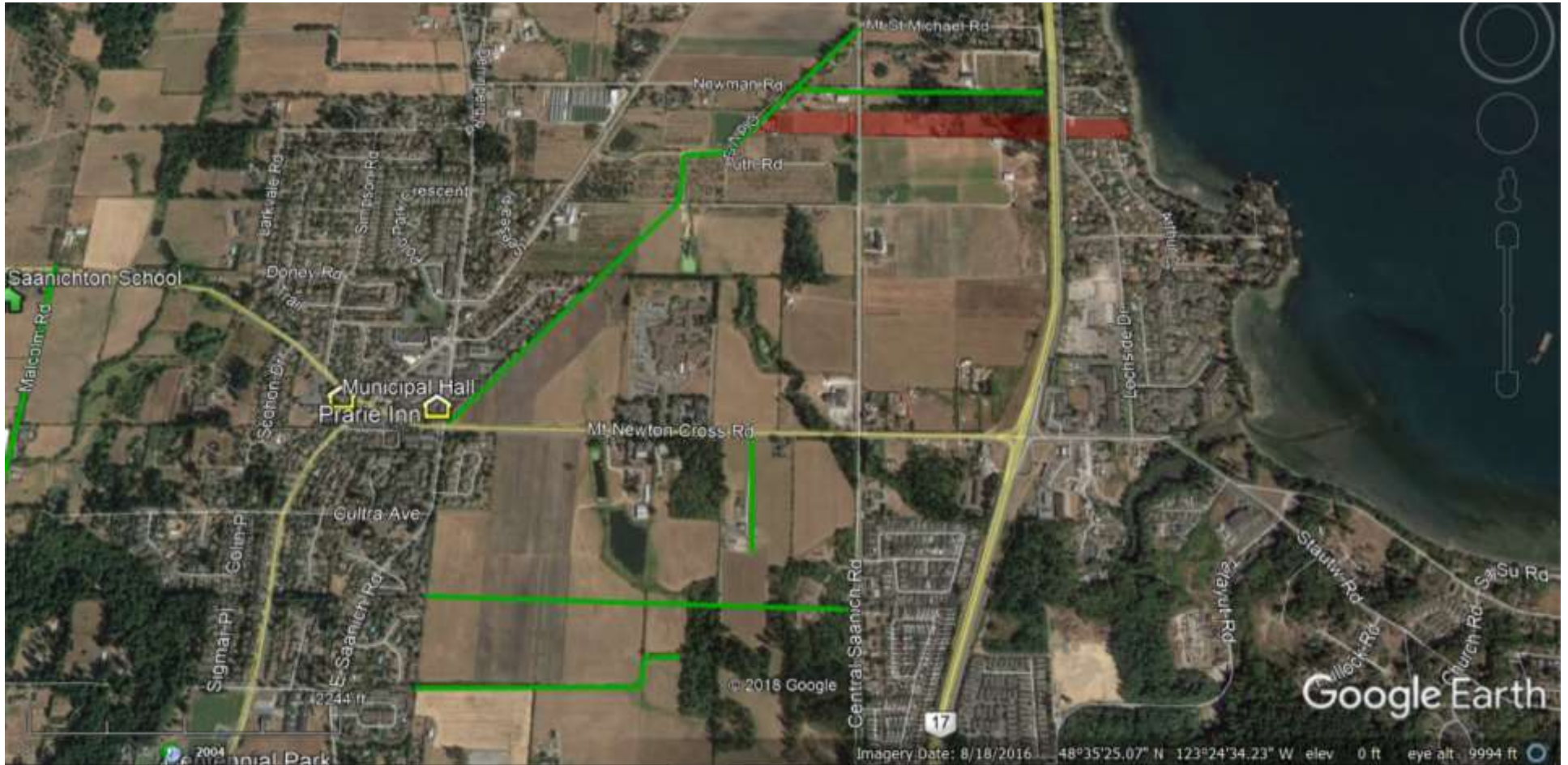
Appendix B: Linking Saanichton to Brentwood

	The lines in green are existing municipal right of ways that have no existing access or pathways. The location of municipal right-of-ways are based on maps produced by the planning department staff at the municipal hall.
	The brown lines are existing pathways based on local knowledge of the author – there may be some missing.



Appendix C: Linking Saanichton to the Highway/Lochside/Tsawout

	The lines in green are existing municipal right of ways that have no existing access or pathways. The location of municipal right-of-ways are based on maps produced by the planning department staff at the municipal hall.
	The brown lines are existing pathways based on local knowledge of the author – there may be some missing.
	The red polygons are municipally-owned properties according to the map generated by the planning department.



Appendix D: “Bird’s Eye View of potential network” – there’s quite a bit of east-west, north-south existing municipal right-of-ways – just a few gaps

